

Multichamber Pacing in Patients with an Implantable Cardioverter Defibrillator

B. MERKELY, H. VÁGÓ, E. ZIMA, L. GELLÉR

Department of Cardiovascular Surgery, Semmelweis University, Budapest, Hungary

Summary

Multichamber pacing may become useful in a number of conditions to achieve either hemodynamic or antiarrhythmic results. Biatrial pacing has been demonstrated to increase arrhythmia-free intervals in patients with frequent drug refractory paroxysmal atrial fibrillation. However, the antiarrhythmic mechanism is not well understood. Therefore, controlled randomized trials will be needed to better identify responsive patients. A dual-chamber implantable cardioverter defibrillator combined with biatrial pacing and a coronary sinus shock coil may be useful in patients with paroxysmal atrial fibrillation and ventricular tachyarrhythmias. The most important feature of this device is its capacity for both synchronous dual chamber and biatrial pacing as well as dual chamber tachyarrhythmia detection and therapy. Biventricular pacing has recently been proposed for treating patients with drug refractory heart failure associated with severe left ventricular systolic dysfunction and intraventricular conduction delay. It is increasingly likely that heart failure patients with poor functional status and a high risk for sudden death will be considered for both an implantable cardioverter defibrillator and a biventricular pacemaker.

Key Words

Implantable cardioverter defibrillator (ICD), biventricular pacing, biatrial pacing

Introduction

A number of new and innovative multichamber pacing modalities have recently been developed for the optimization of cardiac function [8,12-15]. These new techniques aim to decrease the degree of atrial and/or ventricular electromechanical asynchrony by modifying the pathways of depolarization provided by standard pacemakers [6]. Multichamber pacing may become useful in a variety of conditions to achieve either hemodynamic or antiarrhythmic results. Pacing from both the right and left ventricles (or the atria) is often called biventricular (or biatrial) pacing [5]. While biatrial or biventricular pacing is proposed to be effective in the prevention of special arrhythmias, implantable cardioverter defibrillators (ICDs) are accepted in the therapy of a wide range of arrhythmias.

Management of Atrial Fibrillation: Prevention and Therapy

Up to 50 % of patients treated with antiarrhythmic drugs for converting atrial fibrillation (AF) and maintaining sinus rhythm experienced a recurrence during the long-term treatment [18]. In addition, the proarrhythmic effects of these agents limited their widespread use, especially in patients with poor ventricular function [11,17]. The limited efficacy and proarrhythmic risks of antiarrhythmic drug therapy has led to the exploration of nonpharmacologic therapeutic approaches [41].

The first implantable cardioverter defibrillator for atrial application consisted of a three-lead system with right atrial and distal coronary sinus shock coils and a ventricular lead to allow R-wave synchronization and

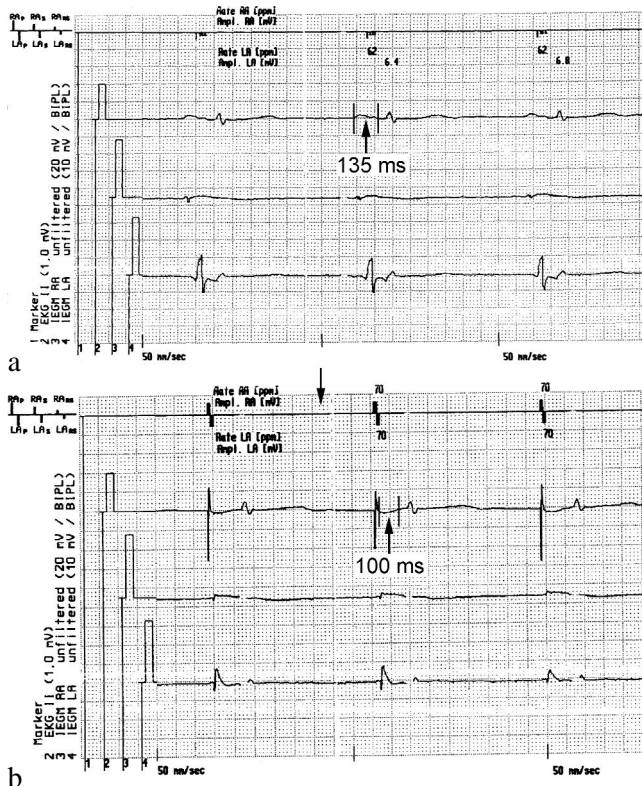


Figure 1. Effect of biatrial pacing on P-wave duration. Intracardiac electrograms: a) spontaneous rhythm b) during biatrial pacing P-wave duration is abbreviated.

post shock ventricular pacing. Right atrial pacing has been shown to reduce recurrences of AF when compared with ventricular demand pacing in observational and controlled clinical trials [3-4]. More recently, multisite atrial pacing modes have been reported to be effective in the prevention of AF including biatrial pacing and dual-site right atrial pacing [25-26,28-29]. Saksena [28-29] and Prakash [24] demonstrated that multi-site atrial pacing trended to be superior to single right atrial pacing in the prevention of recurrent AF. Biatrial pacing has been similarly effective in patients with AF and advanced interatrial block [12]. The mechanism of antiarrhythmic benefit of these modes of atrial pacing is not completely understood [24].

The use of several modalities of treatment in a single patient with AF may provide additional benefits beyond any single therapy. The concept of hybrid therapy may take the form of varying combinations of ablation, pacing (including preventive and antitachycardia pacing), atrial defibrillators, and drugs. Certain combinations may prove to be synergistic for specific types of AF [33].

Biatrial Pacing and ICD

The antiarrhythmic mechanisms of multisite atrial pacing are unknown but could be related to altered electrophysiologic parameters (atrial resynchronization) and improved hemodynamics as the left atrioventricular interval is decreased [10]. Interatrial conduction block with retrograde activation of the left atrium was reported to be associated with a high incidence of atrial tachyarrhythmias [21]. Biatrial pacing resynchronizes the electrical activity of the atria, expressed as normalization of P-wave morphology and duration in contrast to single right atrial or coronary sinus pacing [15] (Figure 1). Prakash et al. [24] observed that single-site pacing was associated with an increase in P-wave duration as well as regional activation times, suggesting a true prolongation of global atrial activation. Dual-site right atrial and biatrial pacing resulted in its abbreviation, which reflects improved global conduction.

There is preliminary evidence that simultaneous right and left atrial pacing increases atrial refractoriness and decreases the intra-atrial conduction delay after a low right atrial ectopic beat [32]. Previous studies have demonstrated that dispersion of refractoriness and anisotropic conduction were two essential elements for sustaining of atrial arrhythmia [1,36]. Biatrial pacing might change the dispersion of refractoriness or anisotropic conduction; thus, it could prevent recurrence of AF. Wood et al. [46] showed that dispersion of atrial repolarization could be minimized by left atrial pacing only or by biatrial pacing in the isolated rabbit heart. By homogenizing atrial repolarization, dispersion of refractoriness will also be decreased.

For many patients, the natural history of paroxysmal AF is a process of degeneration to the chronic form of the disease [20]. Since "AF begets AF", recurrences of AF may lead to a pathologic process of electrical remodeling and/or structural changes, which is thought to promote the persistence of the arrhythmia and make maintenance of sinus rhythm more difficult [37,44]. AF reduces the wavelength of the impulse by reducing the refractory period; therefore, more and more simultaneous reentry circuit development is possible.

The possible role of inhibiting atrial remodeling in the antiarrhythmic mechanism could also be taken into account. By reducing the number of atrial premature beats, the trigger of AF will be eliminated (reentry and focal activity) and the progressive electrophysiological

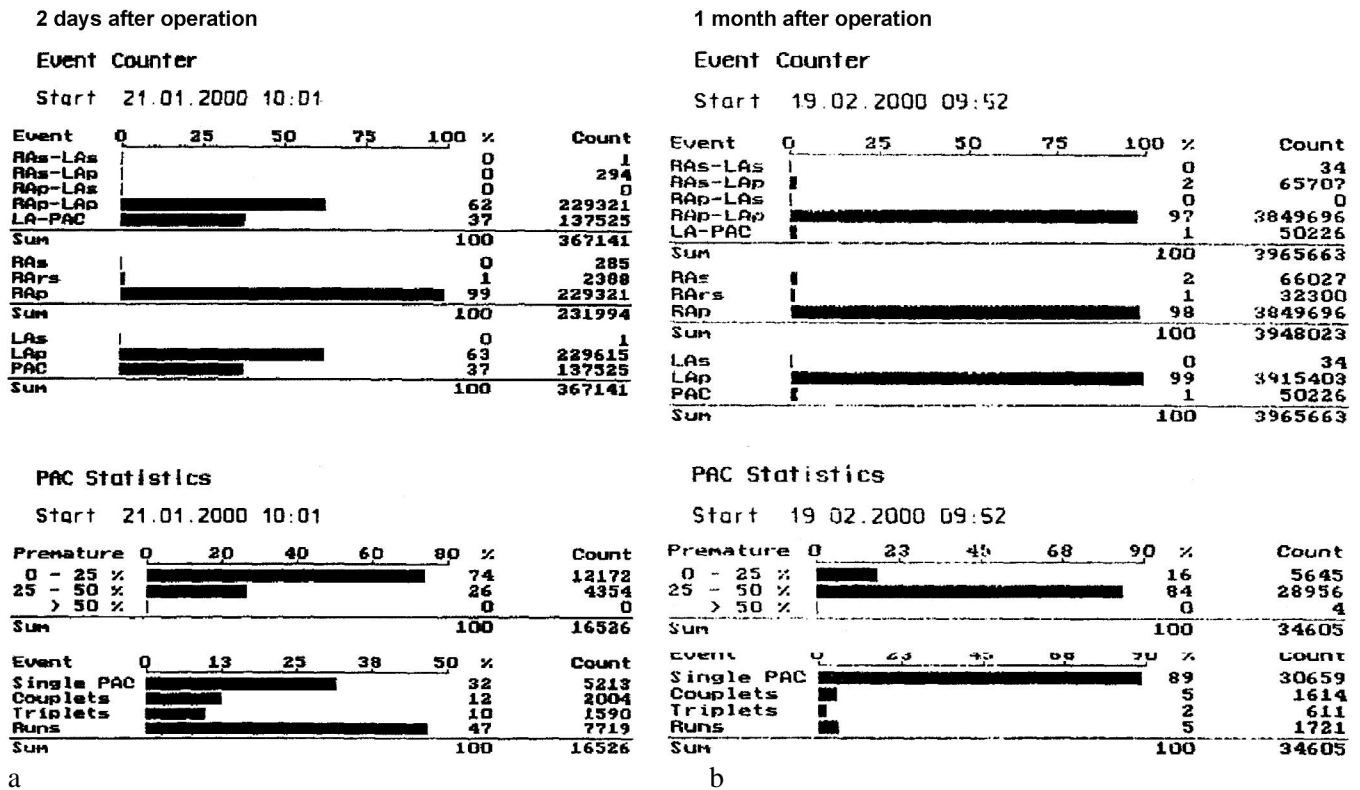


Figure 2. Reduction of the number of atrial premature beats using biatrial stimulation. Event counter and premature atrial contraction (PAC) statistics. a) 2 days after implantation; b) 1 month after implantation.

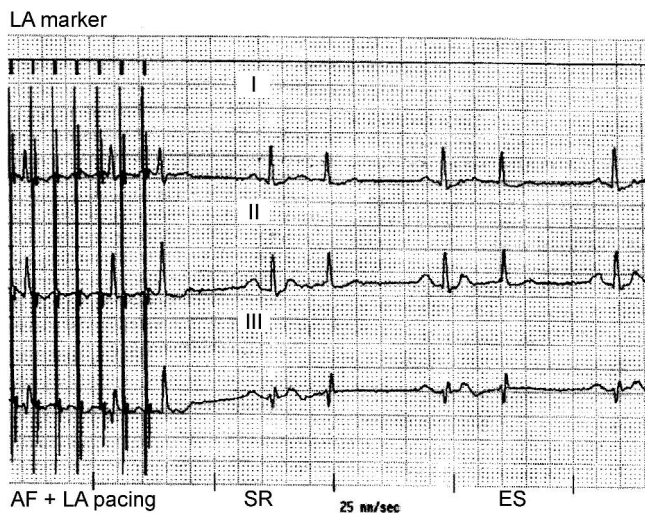


Figure 3. Termination of atrial fibrillation using left atrial burst stimulation. LA = left atrial; AF = atrial fibrillation; SR = sinus rhythm; ES = extrasystole.

and/or structural atrial remodeling will be limited (Figure 2). Premature beats may enhance the inhomogeneity of atrial refractoriness. There is a complex situation in AF with multiple, ever-changing wavelets and a marked functional inhomogeneity of the atrial tissue [30]. Regional control of atrial tissue by rapid pacing is feasible during AF, and, through a multisite approach, this pacing modality might lead to a situation where the remaining nonentrained atrial tissue can no longer reach critical mass [30]. Interestingly, rapid pacing (with bursts) may be effective in the termination of AF or atrial flutter in some cases in not only in the right but also in the left atrium, depending on the origin of the tachyarrhythmia (Figure 3). Up to 30 % of ICD patients have paroxysmal AF. Special multichamber cardioverter defibrillators such as Tachos MSA (Biotronik, Germany) give us the possibility for both synchronous dual chamber and biatrial pacing along with dual chamber tachyarrhythmia detection and therapy. Thus, the duration and possibly also the number of AF episodes are reduced [27]. A high frequency burst and a low energy cardioversion using a coronary sinus shock coil can reduce the duration of AF. Shortening the attacks of AF may exert an antiarrhythmic effect by limiting electrical, anatomi-

cal, and neurohumoral remodeling [38]. Serial increase in post-shock sinus rhythm duration has been seen in some patients treated with repeated endocardial defibrillation [34]. Therefore, sinus rhythm should be restored as rapidly as possible to avoid adverse electrophysiological remodeling.

Biventricular Pacing

Biventricular pacing has recently been proposed for treating patients with drug refractory heart failure associated with severe left ventricular systolic dysfunction and intraventricular conduction delay [9]. The rationale of multisite biventricular pacing in advanced heart failure is based on the high incidence and gradual deterioration of conduction disorders, especially intraventricular conduction delay [45,47]. These conduction disorders are responsible for major electromechanical abnormalities that mainly affect left atrioventricular (AV) synchrony and the ventricular contraction/relaxation sequence [48]. The purpose of multisite, biventricular pacing is to restore ventricular relaxation and contraction sequences by simultaneously pacing both ventricles at specific sites [2].

The potential interest in biventricular pacing to treat refractory heart failure was first investigated in studies of acute hemodynamics using temporary leads. Some investigators were able to find significant improvement in hemodynamic parameters (increased cardiac output, lower pulmonary capillary wedge pressure (PCWP) and V-wave) in patients with advanced heart failure and left ventricular systolic dysfunction under biventricular pacing, relative to intrinsic conduction or single-site DDD right ventricular pacing [14]. Cazeau et al. demonstrated that this acute hemodynamic improvement was independent of AV delay optimization [9]. Biventricular pacing decreased mitral valve regurgitation, which was confirmed by scintigraphic and echo-Doppler examinations. Most of the examined patients showed an abnormal activation sequence during standard pacing, which was corrected by biventricular pacing. Therefore, biventricular pacing improved not only the electrical, but also the mechanical activation sequence.

The results of one study demonstrated that the long-term benefits of biventricular pacing were correlated with the quality of ventricular resynchronization, as assessed from shorter QRS duration and the tendency for QRS axis normalization [2]. However, other expe-

riences are conflicting. The results of one clinical study demonstrated [7] that the reduction of QRS duration did not predict the best hemodynamic results, which was also strongly supported by our experiences with biventricular pacing. Our results suggest that decreasing mitral regurgitation and PCWP are important factors. Figure 5 shows the intracardiac electrogram with a QRS duration of 120 ms with biventricular pacing, which is profoundly shorter in comparison to the 180 ms QRS duration for the patient without pacing.

In patients with end-stage heart failure, multisite pacing may be associated with a rapid and sustained hemodynamic improvement. In this way, arrhythmogenic factors may also be attenuated. Slight overdrive pacing could have an antiarrhythmic effect on ventricular arrhythmias based on a triggered or reentry mechanism.

A randomized crossover study investigated the effects of biventricular pacing on ventricular arrhythmogenesis [43]. The investigators concluded that biventricular pacing significantly decreased the 24-hour ventricular ectopic count and the ventricular salvo count, as measured by Holter monitoring, without altering mean daily heart rate when compared to no pacing. Ventricular extrasystoles can trigger ventricular tachycardia based on different mechanisms. This has important indications concerning the potential safety and antiarrhythmic potential of this novel therapy.

Biventricular Pacing and ICD

A leading cause of death in patients suffering from severe heart failure is sudden death mediated by a malignant ventricular arrhythmia [19]. Antiarrhythmic drug therapies have failed to influence this risk [35], whereas ICDs have been shown to be beneficial for the prevention of arrhythmic sudden death in certain patient groups [23]. Therefore, the use of an ICD is increasingly accepted as a standard therapy for patients with heart failure who are at high risk of sudden death [22]. In addition to their poor prognosis, heart failure patients also suffer from a poor quality of life [16]. ICD implantation does not alter this impaired quality of life, whereas biventricular pacing has been advocated for the symptomatic management of medically refractory New York Heart Association (NYHA) Class III-IV heart failure. There is no evidence that this pacing technique will affect the prognosis in this patient group. It is increasingly likely that heart failure



Figure 4. Biventricular ICD with right atrial, right ventricular, and coronary sinus electrodes. Arrow shows the distal end of coronary sinus electrode (Computer tomograph image).

patients with poor functional status and at high risk of sudden death will be considered for both an ICD and a biventricular pacemaker [39]. Figure 4 shows a biventricular ICD with right atrial and ventricular leads, whereas the left ventricle is paced by a lead that is inserted in a coronary sinus tributary vein.

Walker et al. reported their preliminary experiences with the combined use of an ICD and a biventricular pacemaker in six patients with heart failure and a malignant ventricular arrhythmia [42]. Four patients underwent both ICD and biventricular pacemaker implantation, while only two patients underwent a single device implantation. They concluded that implantation of both devices may be feasible with currently available pacing technology.

One study evaluated the number of ICD patients (n = 360) presenting a biventricular pacing indication [31]. These investigators predefined possible indications for biventricular pacing as follows: complete bundle branch block, left ventricular ejection fraction < 35 %, and NYHA-class > II. They concluded that about 10 %

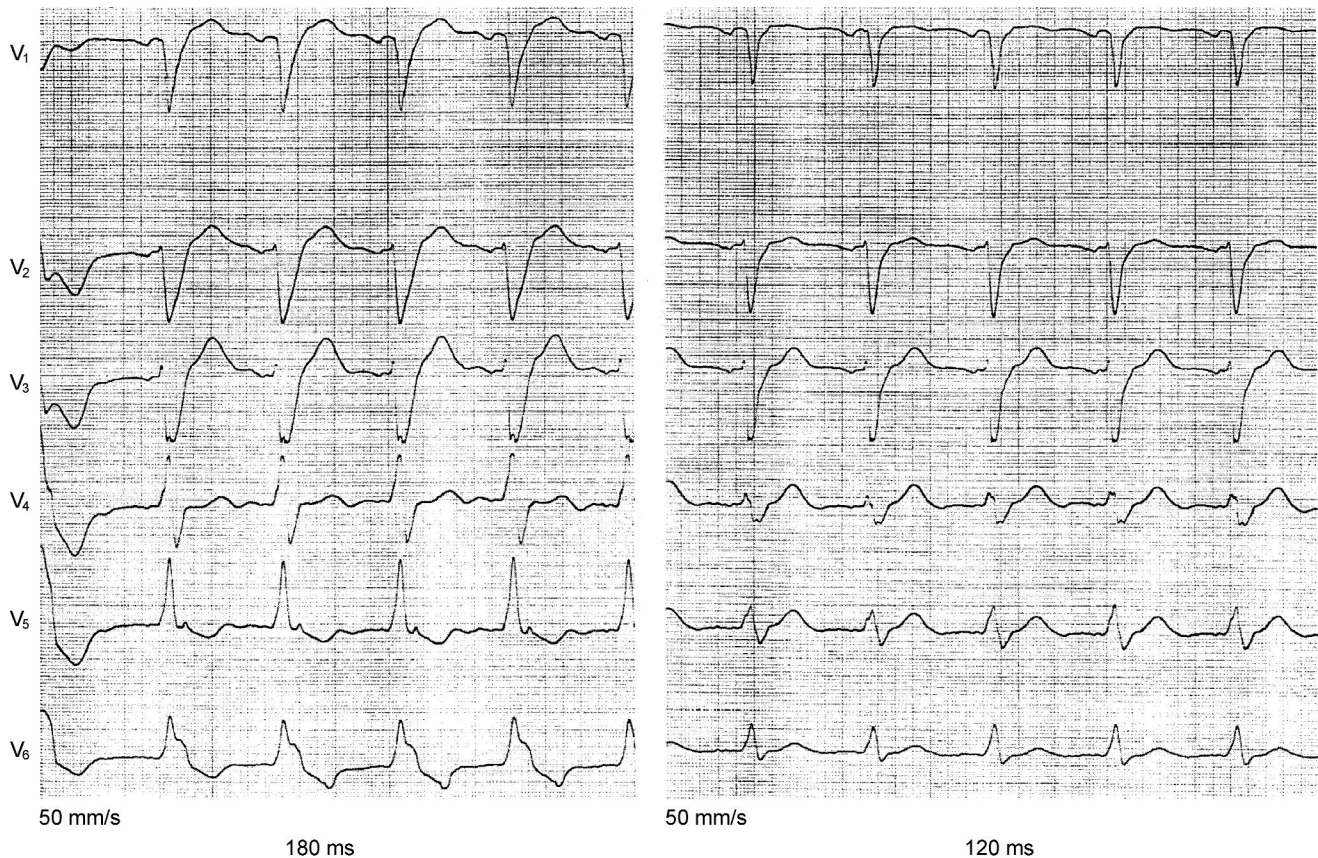


Figure 5. Reduction of QRS duration using biventricular pacing (right panel).

Patient number	Age, gender	Underlying heart disease	Arrhythmia	NYHA (BiV: NYHA II)	EF (%)	LV diameter (mm)	PQ-intervall (ms)	QRS-intervall (ms)	Drugs
1	56 years, male	Post MI, post CABG, congestive HF, MI II, LV aneurysm	Sustained VT 210/min, VF	NYHA III (BiV: NYHA II)	30	D: 70, S: 61	100	200	ACE-inhibitor β -blocker, diuretics, amiodaron
2	61 years, female	Post MI, congestive HF, MI II-III, LV aneurysm	Nonsustained VT and syncope	NYHA IV (BiV: NYHA II)	23	D: 75, S: 67	140	200	ACE-inhibitor β -blocker, diuretics, amiodaron
3	46 years, male	DCM, MI II-III	Nonsustained VT and syncope	NYHA IV (BiV: NYHA II)	15	D: 93, S: 80	100	240	Digitalis, ACE-inhibitor, diuretics
4	63 years, male	Post MI, congestive HF	Sustained VT, paroxysmal AF	NYHA III (BiV: NYHA II)	26	D: 72, S: 63	160	150	Digitalis, ACE-inhibitor, diuretics
5	59 years, male	Post MI, post CABG, congestive HF, MI II	Sustained VT, paroxysmal AF	NYHA III (BiV: NYHA II)	30	D: 73, S: 61	150	150	ACE-inhibitor, β -blocker, diuretics, amiodaron

Table 1. Patient data. All patients were in sinus rhythm during ECG evaluation and presented with left bundle branch block. Post MI = post myocardial infarction; CABG = coronary artery bypass graft; HF = heart failure; MI = mitral insufficiency; LV = left ventricular; DCM = dilated cardiomyopathy; VT = ventricular tachycardia; VF = ventricular fibrillation; AF = atrial fibrillation; BiV = biventricular pacing; EF = ejection fraction; D = end-diastolic; S = end-systolic.

of their ICD patients had an indication for biventricular pacing at the time of implantation. During the mean follow-up of 34 months, 16 % of all patients presented an indication for biventricular pacing. Furthermore, patients with an indication for biventricular pacing had a higher mortality rate and more frequent AF than patients without such pacing [31].

Since July 1999, Vogt et al. implanted new cardioverter defibrillator systems with the option for transvenous bi- or univentricular stimulation in eight patients (EF 20 % \pm 5 %, QRS duration 181 \pm 20 ms) [40]. 4 weeks after the institution of AV-delay optimized pacing, heart failure symptoms and functional parameters improved markedly. They concluded that electric resynchronization in ICD patients with advanced chronic heart failure and left bundle branch block leads to a striking improvement of symptoms and functional

parameters shortly after implantation. ICD candidates with left bundle branch block and ventricular tachycardia/fibrillation should be considered for a biventricular system. A long-term follow-up of these patients will prove whether life-threatening arrhythmias decrease. From July to November 2000, we implanted biventricular ICDs (Tachos MSV, Biotronik) in five patients (57 \pm 6.67 years, four male/one female). All of the patients, suffering from drug refractory heart failure (either congestive heart failure or dilated cardiomyopathy, NYHA III-IV), had a very low ejection fraction (EF < 30 %) and a wide QRS (QRS > 150 ms) with a left bundle branch block morphology. In the medical history of these patients, sustained ventricular tachycardia (VT) and ventricular fibrillation, sustained VT, and nonsustained VT combined with syncope were present in 1, 2 and 2 cases, respectively (Table 1).

Patient number	Right ventricular amplitude threshold (mV)		Left ventricular amplitude threshold (mV)		Right atrial amplitude threshold (mV)		Defibrillation threshold (J)	QRS-intervall	
	(mV)	(V)	(mV)	(V)	(mV)	(V)		sponaneous (ms)	BiV (ms)
1	7	0.4	30	0.4	3.1	0.3	20	200	130
2	12	0.4	12	0.5	2.1	0.5	12	200	160
3	36	0.4	12	0.7	1.8	0.7	20	240	140
4	9	0.5	11	1.2	2.2	1.0	10	150	135
5	12	0.3	14	1.6	3.5	0.4	8	150	130

Table 2. Electrophysiological parameters in study patients.

Table 2 shows the electrophysiological parameters. In one case, an epicardial, screw-in, left ventricular electrode was implanted. The QRS duration decreased significantly (mean change: 49 ± 35.7 ms) using biventricular stimulation in all of the patients; moreover, the NYHA functional class also improved (Table 1). In the mean follow-up period (3.5 ± 1.7 months), two episodes of ventricular arrhythmias were observed in one patient.

The future potential for the combination of these devices is of importance since medically refractory heart failure is associated with a poor prognosis and an impaired quality of life, and there are no other therapies with widespread availability that address both of these problems. Potential benefits include long-term left ventricular remodeling (secondary to biventricular pacing) with a resulting reduction in arrhythmogenesis, a further improvement in patients' quality of life, and a reduction in the long-term risk of mortality. Prospective randomized trials investigating the effect of a biventricular ICD on the reduction of morbidity and mortality, the cost-effectiveness ratio, and the exact indication are required before this technique can achieve widespread acceptance [42].

References

- [1] Alessie MA, Bonke FIM, Schopman FJG. Circus movement in rabbit atrial muscle as a mechanism of tachycardia, II: The role of nonuniform recovery of excitability in the occurrence of unidirectional block, as studied with multiple microelectrodes. *Circ Res.* 1976; 39: 168-177.
- [2] Alonso C, Leclercq C, Victor F, et al. Electrocardiographic predictive factors of long-term clinical improvement with multisite biventricular pacing in advanced heart failure. *Am J Cardiol.* 1999; 84: 1417-1421.
- [3] Andersen HR, Nielsen JC, Thomsen PE, et al. Long-term follow-up of patients from a randomised trial of atrial versus ventricular pacing for sick-sinus syndrome. *Lancet.* 1997; 350: 1210-1216.
- [4] Andersen HR, Thuesen L, Bagger JP, et al. Prospective randomized trial of atrial versus ventricular pacing in sick-sinus syndrome. *Lancet.* 1994; 344: 1523-1528.
- [5] Bakker PF, Meijburg H, de Jonge N, et al. Beneficial effects of biventricular pacing in congestive heart failure (abstract). *PACE.* 1994; 17: 820.
- [6] Barold SS, Cazeau S, Mugica J, et al. Permanent multisite cardiac pacing. *PACE.* 1997; 20: 2725-2729.
- [7] Bordachar P, Garrigue S, Reuter S, et al. Importance of QRS duration during multisite ventricular stimulation in heart failure: A hemodynamic noninvasive study using peak endocardial acceleration measurements (abstract). *PACE.* 2000; 23: 636.
- [8] Cazeau S, Ritter P, Bakdach S, et al. Four-chamber pacing in dilated cardiomyopathy. *PACE.* 1994; 17: 1974-1979.
- [9] Cazeau S, Ritter P, Lazarius A, et al. Multisite pacing for end-stage heart failure: Early experience. *PACE.* 1996; 19: 1748-1757.
- [10] Chirife R. Left heart function during right heart pacing. *PACE.* 1983; 17: 1451-1455.
- [11] Copley SE, Antman EM, Berlin JA, et al. Efficacy and safety of quinidine therapy for maintenance of sinus rhythm after cardioversion. A meta-analysis of randomized control trials. *Circulation.* 1990; 82: 1106-1116.
- [12] Daubert C, Gras D, Berder V, et al. Permanent atrial resynchronization by synchronous bi-atrial pacing in the preventive treatment of atrial flutter associated with high degree interatrial block. *Arch Mal Coeur Vaisseaux.* 1994; 87: 1535-1546.
- [13] Daubert C, Leclercq C, Le Breton H, et al. Permanent left atrial pacing with a specifically designed coronary sinus lead. *PACE.* 1997; 20: 2755-2764.
- [14] Daubert C, Pavin D, Baisset JM, et al. Pacing therapy in congestive heart failure: Present status and new perspectives. In: Barold SS, Mugica J (editors). *Recent Advances in Cardiac Pacing. Goals for the 21st Century.* Armonk, NY: Futura Publishing. 1998.
- [15] Daubert JC, Leclercq C, Pavin D, et al. Biatial synchronous pacing. A new approach to prevent arrhythmias in patients with atrial conduction block. In: Daubert JC, Prystowsky EN, Ripart A (editors). *Prevention of Tachyarrhythmias with Cardiac Pacing.* Armonk, NY: Futura Publishing. 1997: 99-119.
- [16] Dracup K, Walden JA, Stevenson LW, et al. Quality of life in patients with advanced heart failure. *J Heart Lung Transplant.* 1992; 11: 273-279.
- [17] Feld GK, Chen PS, Nicod P, et al. Possible atrial proarrhythmic effects of class IC antiarrhythmic drugs. *Am J Cardiol.* 1990; 66: 378-383.
- [18] Fuchs T, Podrid PJ. Pharmacologic therapy for revision of atrial fibrillation and maintenance of sinus rhythm. In: Falk RH, Podrid PJ (editors). *Atrial fibrillation: Mechanisms and Management.* New York: Raven Press. 1992: 253-254.
- [19] Goldman S, Johnson G, Cohn JN, et al. Mechanism of death in heart failure. The vasodilator-heart failure trials. *Circulation.* 1993; 87: 124-131.
- [20] Kopecky SL, Gersh BJ, McGoon MD, et al. The natural history of lone atrial fibrillation. A population-based study over three decades. *N Engl J Med.* 1987; 317: 669-674.
- [21] Bayes de Luna A, Cladellas M, Oter R, et al. Interatrial conduction block and retrograde activation of the left atrium and paroxysmal supraventricular tachyarrhythmia. *Eur Heart J.* 1988; 9: 1112-1118.
- [22] Merkely B. Possible advantages of dual-chamber implantable cardioverter defibrillator therapy. *Prog Biomed Res.* 1999; 4: 415-421.
- [23] Moss AJ, Hall WJ, Cannom DS, et al. Improved survival with an implanted defibrillator in patients with coronary disease at high risk of ventricular arrhythmia. *N Engl J Med.* 1996; 335: 1933-1940.
- [24] Prakash A, Delfaut Ph, Krol RB, et al. Regional right and left atrial activation patterns during single- and dual-site atrial pacing in patients with atrial fibrillation. *Am J Cardiol.* 1998; 82: 1197-1204.

- [25] Ramdat Misier AR, Beukema WP, Oude Luttikhuis HA. Multisite or alternate site pacing for the prevention of atrial fibrillation. *Am J Cardiol.* 1999; 83: 237-240.
- [26] Ramdat Misier AR, Opthof T, Hemel NM, et al. Increased dispersion of "refractoriness" in patients with idiopathic paroxysmal atrial fibrillation. *JACC.* 1992; 19: 1531-1535.
- [27] Revishvili A SH, Thong T, Schadach M. A new dual chamber cardioverter-defibrillator with left atrial pacing support. *Prog Biomed Res.* 2000; 5: 100-106.
- [28] Saksena S, Delfaut P, Prakash A, et al. Multisite electrode pacing for prevention of atrial fibrillation. *J Cardiovasc Electrophysiol.* 1998; 9: 155-162.
- [29] Saksena S, Prakash A, Hill M, et al. Prevention of recurrent atrial fibrillation with chronic dual-site right atrial pacing. *JACC.* 1996; 28: 687-694.
- [30] Schoels W, Becker R. Mechanism of pacing interventions in atrial fibrillation (review). *J Cardiovasc Electrophys.* 1998; 9 (Supplement 8): S13-S17.
- [31] Siemon G, Schwacke H, Droegemueller A, et al. Biventricular pacing in patients with life threatening tachyarrhythmias: How many patients are possible candidates (abstract)? *Eur Heart J.* 2000; 21: P1112.
- [32] Sopher SM, Murgatroyd FD, Slade AK, et al. Dual site atrial pacing promotes sinus rhythm in paroxysmal atrial fibrillation. *Circulation* (abstract). 1995; 92: 532.
- [33] Spurrell P, Sulke N. Pacing and defibrillation for the prevention and termination of atrial fibrillation. In: Ovsyshcher IE (editor). *Cardiac Arrhythmias And Device Therapy: Results and Perspectives for the New Century.* Armonk, NY: Futura Publishing, 2000: 181-188.
- [34] Timmermans C, Wellens H. Effect of device-mediated therapy on symptomatic episodes of atrial fibrillation (abstract). *JACC.* 1998; 31: 331A.
- [35] Toubol P. A decade of clinical trials: CAST to AVID. *Eur Heart J.* 1999; 20: C2-C10.
- [36] Tsuji H, Fujiki A, Tani M, et al. Quantitative relationship between atrial refractoriness and the dispersion of refractoriness in atrial vulnerability. *PACE.* 1992; 15: 403-410.
- [37] Van Gelder IC, Crijns HJ, Blanksma PK, et al. Time course of hemodynamic changes and improvement of exercise tolerance after cardioversion of chronic atrial fibrillation unassociated with cardiac valve disease. *Am J Cardiol.* 1993; 72: 560-566.
- [38] Van Gelder IC, Crijns HJ. Cardioversion of atrial fibrillation and subsequent maintenance of sinus rhythm. *PACE.* 1997; 20: 2675-2683.
- [39] Vogt J, Hansky B, Lamp B. Biventricular stimulation in heart failure patients with ICD-indication - First experience with a new implantable cardioverter/defibrillator (abstract). *PACE.* 2000; 23: 657.
- [40] Vogt J, Hansky B, Lamp B, et al. Biventricular stimulation in heart failure patients with ICD-indication: First experience with a new implantable cardioverter/defibrillator (abstract). *Eur Heart J.* 2000; 21: P2537.
- [41] Waldo AL, Prystowsky EN. Drug treatment of atrial fibrillation in the managed care era. *Am J Cardiol.* 1998; 81: 23-29.
- [42] Walker S, Levy T, Rex S, et al. Preliminary results with the simultaneous use of implantable cardioverter defibrillators and permanent biventricular pacemakers: Implications for device interaction and development. *PACE.* 2000; 23: 365-372.
- [43] Walker S, Levy T, Rex S, et al. Does biventricular pacing decrease ventricular arrhythmogenesis (abstract)? *Eur Heart J.* 2000, 21: P1124.
- [44] Wiffels M, Kirchhof C, Dorland R, et al. Atrial fibrillation begets atrial fibrillation. *Circulation.* 1995; 92: 1954-1968.
- [45] Wilensky RL, Yudelman P, Cohen AI, et al. Serial electrocardiographic changes in idiopathic dilated cardiomyopathy confirmed at necropsy. *Am J Cardiol.* 1988; 62: 276-283.
- [46] Wood MA, Mangano RA, Schieken RM, et al. Modulation of atrial repolarization by site of pacing in the isolated rabbit heart. *Circulation.* 1996; 94: 1465-1470.
- [47] Xiao HB, Roy C, Fujimoto S, et al. Natural history of abnormal conduction and its relation to prognosis in patients with dilated cardiomyopathy. *Int Cardiol.* 1996; 53: 163-170.
- [48] Xiao HB, Roy C, Gibson DG. Nature of ventricular activation in patients with dilated cardiomyopathy: Evidence for bilateral bundle branch block. *Br Heart J.* 1994; 72: 167-174.

Contact

Béla Merkely MD, PhD
Department of Cardiovascular Surgery
Semmelweis University
Városmajor u. 68
Budapest XII
Hungary
Telephone: +36 209274937
Fax: +36 13554684
E-mail: merkbel@hermes.sote.hu